

## CEF Study: Preparing FAIRway 2 works on Rhine – Danube Corridor

## CEF studija: Priprema FAIRway 2 radova na Rajna - Dunav koridoru

### Activities by Croatian partner

#### Monitoring of the Croatian/Serbian Danube Common Section

- ▶ Set up an inventory of navigational and environmental characteristics of the HR/RS common section of the Danube (river-km 1433,1 to 1295,5).

#### ▼ Use collected data ...

... for navigation purposes - to identify future physical works interventions

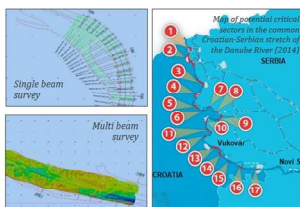
... to support the environmental authorities in the definition of the conservation objectives of the River Basin Management Plans in Croatia



#### Focus on the navigational parameters and bottlenecks

- Riverbed surveys (single beam and multi beam surveying)
- Inventory of existing river regulation structures (digital catalogue)
- Suspended sediment and bedload measurements (few times per year under diff. hydrological conditions)
- Velocity & flow measurements (few times per year under diff. hydrological conditions)
- Investigation works (determine underground water and temperature)

Input to "Modelling & Multi-criteria Analysis" to identify possible variants for future infrastructure related measures



Monitoring Plan (ready to download)

#### Focus on environmental characteristics

- Inventory of **ichthyofauna** (1x season – during spawning, summer and winter)
- Inventory of **ornithofauna** (sand bar nesting species, steep river banks nesting species, passage birds fauna, wintering bird fauna)
- Mapping of river bottom types (benthos) (1x project duration between May-Oct)
- Mapping floodplain habitats (1x project duration between mid Jul - end Aug)

▶ Catalogue of biodiversity components in line with national legislation and in compliance with EU legislation (EIA, Birds, Habitats, WFD)

▶ Definition of conservation objectives for River Basin Management Plans in Croatia

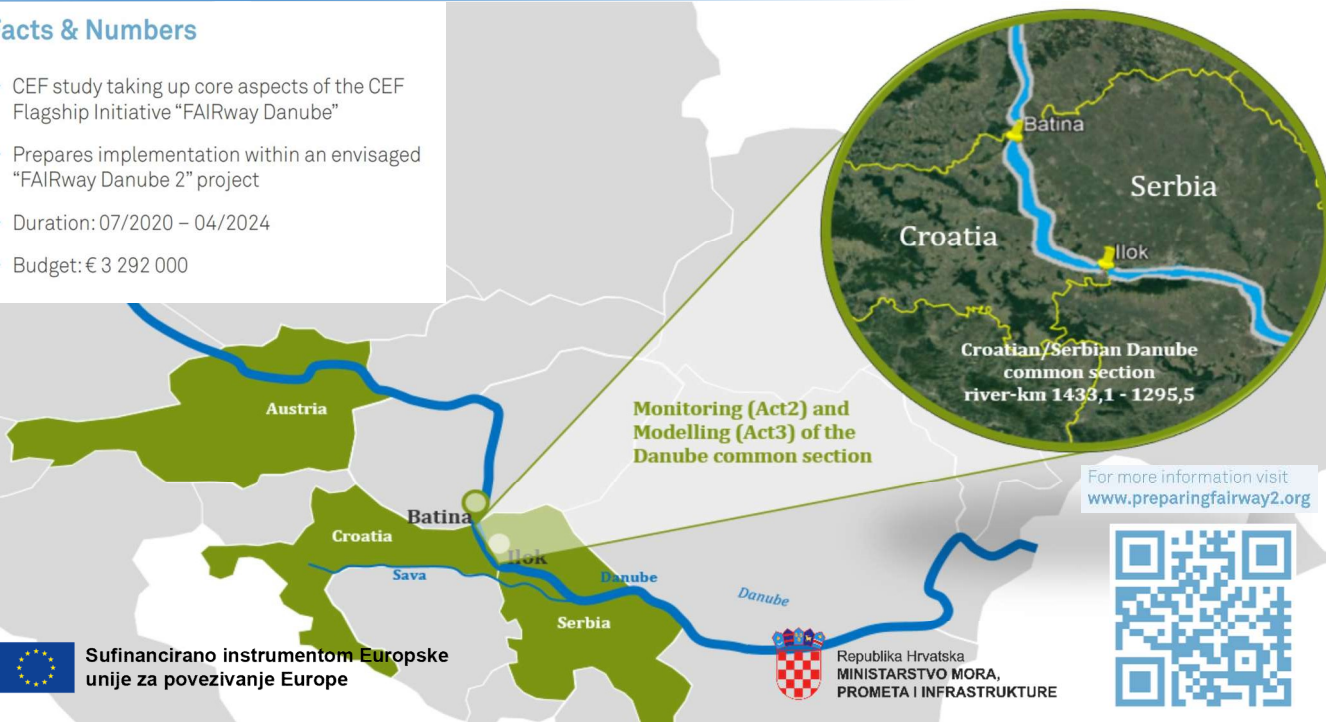
▶ All consolidated into GIS database



Monitoring Plan (ready to download)

### Facts & Numbers

- ▶ CEF study taking up core aspects of the CEF Flagship Initiative "FAIRway Danube"
- ▶ Prepares implementation within an envisaged "FAIRway Danube 2" project
- ▶ Duration: 07/2020 – 04/2024
- ▶ Budget: € 3 292 000



Monitoring (Act2) and Modelling (Act3) of the Danube common section

For more information visit [www.preparingfairway2.org](http://www.preparingfairway2.org)

