

Danube Business Talk 2024

Waterway infrastructure achievements in Romania



15/05/2024, Carmen Manescu ACN, Romeo Soare AFDJ

Danube Black Sea Canal

Locks modernization: Equipment and installations

Cernavoda Lock



Danube Black Sea Canal

Locks modernization: Equipment and installations

Agigea Lock



Danube Black Sea Canal

Locks modernization: Equipment and installations

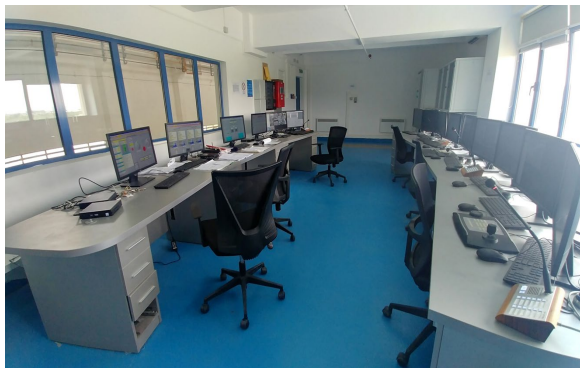
Ovidiu Lock and high water galleries of Ovidiu and Navodari Locks



Danube Black Sea Canal

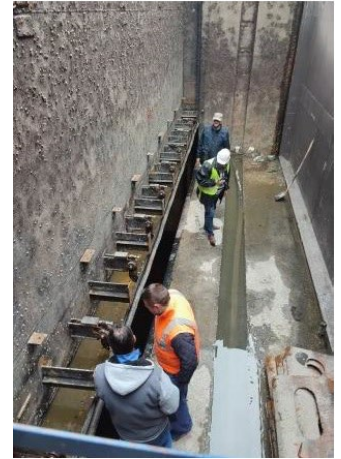
Locks modernization: Equipment and installations

Cernavoda Pumping Station and pumping stations for defense against floods



Danube Black Sea Canal

Modernization of Navodari Lock in order to increase navigation safety
(2024 - 2028)

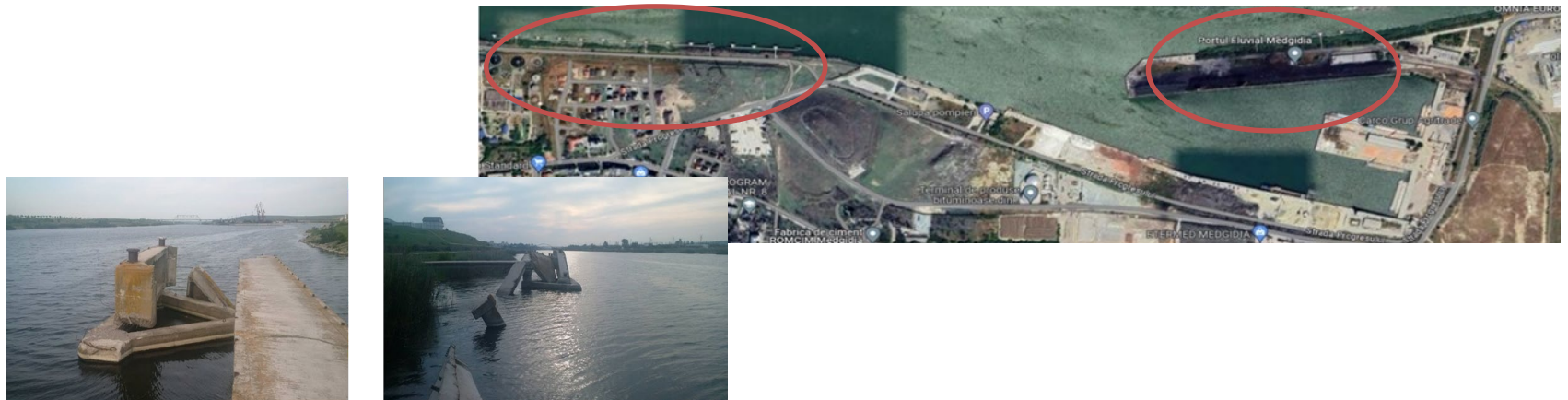


Danube Black Sea Canal

Modernization of mooring places in Port Basarabi



Modernization of mooring places in Port Medgidia



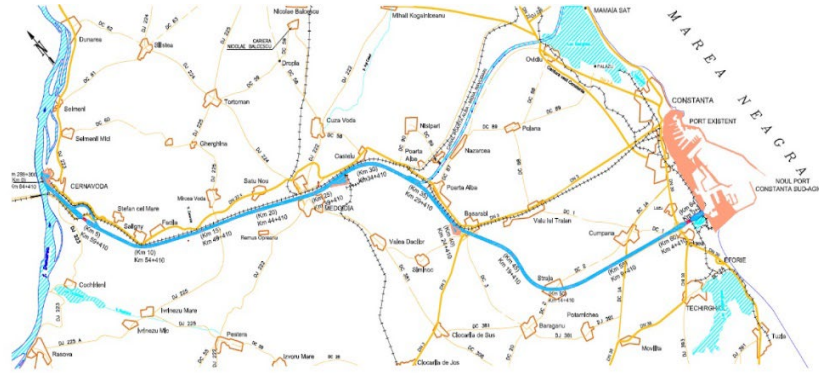
Danube Black Sea Canal

Overview of upgrading measures

	Basarabi	Medgidia upstream	Medgidia downstream
Danube Black Sea Canal km	25,450 – 25,150	38,407-37,798	37,010 -36,701
Length	approx. 301 m	approx. 609 m	approx.309 m
Duc d’Albi	2 and new superstructure	4 and new superstructure	2 and new superstructure
Mooring / docking system	16 bollards; 64 quay fenders	30 bollards; 120 quay fenders	16 bollards; 64 quay fenders
Access facilities	2 bridges for crew	9 bridges for crew	2 bridges for crew
Shore-side electricity	Yes	Yes	No

Danube Black Sea Canal

Modernization of Danube navigable canals: Danube Black Sea Canal and Poarta Alba Midia Navodari Canal in order to increase navigation safety (2024- 2030)



Maintenance activities in common sector RO – BG

Surveying activity in Critical locations: **Calnovat, Calnovat upstream, Corabia, Bechet, Dobrina, Bogdan-Secian, Salcia and Garla Mare,**

- 63 surveys (SB),
- 37 surveys (MB),
- 13 survey (discharge).

The marking activity was performed by vessels **Concordia EU 2019, Semnal 1 and Donaris 3** covering the entire sector, in 30 marking trips

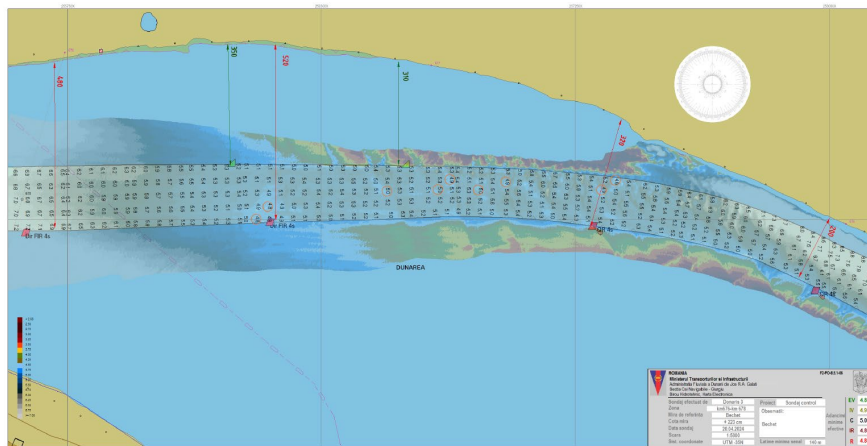
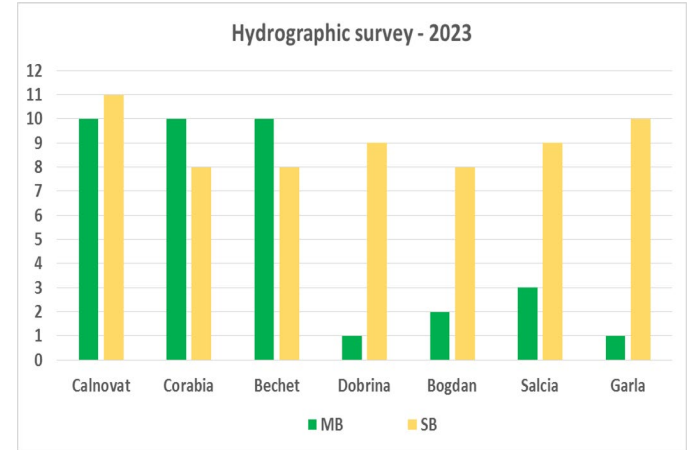
The dredging activity was performed as follow:

2023

Framework contract (2023 – 300,000 mc)
Own resources (2023 – 23,000 mc)

2024

(2024 – 210,000 mc)
(2024 – under preparation)



Diagnoza pentru 08.05.2024 ora 7⁰⁰ și prognoza hidrologică a debitelor medii zilnice pentru intervalul 09.05.2024–15.05.2024 pentru Dunăre la intrarea în țară și pentru principalele secțiuni de pe sectorul românesc

Secțiunea		08.05.2024	09.05.2024	10.05.2024	11.05.2024	12.05.2024	13.05.2024	14.05.2024	15.05.2024
Bazileș	Q(mc/s)	4600	4600	4600	4600	4600	4600	4600	4600
P.D.F. II	H(cm)	4865							
	Q(mc/s)	142	162	166	163	159	152	148	14
Calafat	Q(mc/s)	4210	4440	4490	4450	4400	4320	4280	424
Faza I = 550	+ΔH(cm)								
Gheata	H(cm)								
Faza II = 600	Q(mc/s)	180	197	210	212	211	207	202	19
Bechet	Q(mc/s)	4430	4650	4820	4850	4830	4780	4720	465
Faza I = 550	+ΔH(cm)								
Gheata	H(cm)	128	133	149	159	159	156	152	14
Corabia	Q(mc/s)	4469	4535	4750	4886	4886	4845	4790	472
Faza I = 500	+ΔH(cm)								
Gheata	H(cm)								
Faza II = 550	Q(mc/s)	151	152	160	171	175	174	169	16
Tr. Măgurele	Q(mc/s)	4370	4380	4500	4670	4730	4710	4640	459
Faza I = 500	+ΔH(cm)								
Gheata	H(cm)								
Faza II = 610	Q(mc/s)	187	180	188	200	207	207	204	20
Zimnicea	Q(mc/s)	4770	4690	4780	4930	5030	5030	4990	493
Faza I = 530	+ΔH(cm)								
Gheata	H(cm)								
Giurgiu	H(cm)	146	133	135	146	155	158	156	15
Faza I = 570	Q(mc/s)	4850	4680	4710	4850	4970	5000	4980	493
Faza II = 640	+ΔH(cm)								
Gheata	H(cm)								
Oltenița	Q(mc/s)	172	157	152	157	167	172	172	16
Faza I = 550	+ΔH(cm)								
Gheata	H(cm)	5070	4860	4790	4860	5000	5070	5070	503
Faza II = 630	+ΔH(cm)								
Gheata	H(cm)								
Călușeni	Q(mc/s)	152	134	123	123	131	139	142	14
Faza I = 440	+ΔH(cm)	5180	4950	4810	4810	4910	5010	5050	502

SWIM - SMART Waterway Integrated Management

SWIM project Results

- Integrated Concept to ensure a Good Navigation Status;
- Technical equipment to carry out capital dredging works and enhanced safety of navigation;
- Dredge, pontoon, technical assistance vessel, pipeline, 2 hopper barges
- SWIM IT Platform for capital dredging;



Concept integrat pentru asigurarea conditiilor de navigatie

Subiectul proiectului	Concept integrat lucrari dragaj capital
Version	v0.2
Data	01.10.2018

Co-financed by the European Union
Connecting Europe Facility



New dredgers, CALAFAT and CERNAVODA

Budget state – financed 2 new Self-propelled suction hopper dredger



Self-propelled suction hopper dredger, with its own warehouse for transporting dredged material,

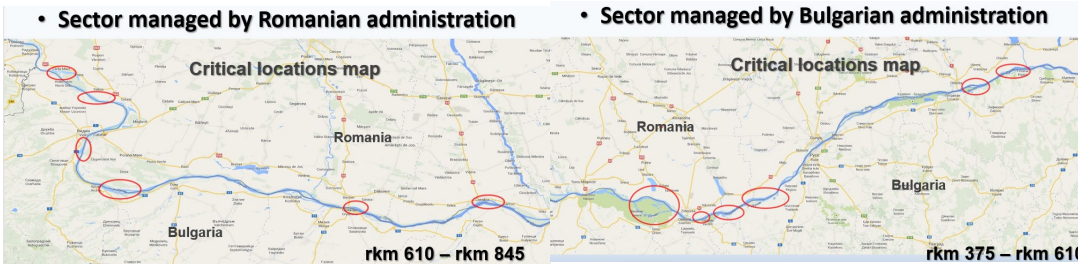
- capacity 460 mc,
- dredging pump capacity 2000 mc/h,
- Length 64m,
- width 12m,
- max draft 2.48m,
- Speed 10 km / h.



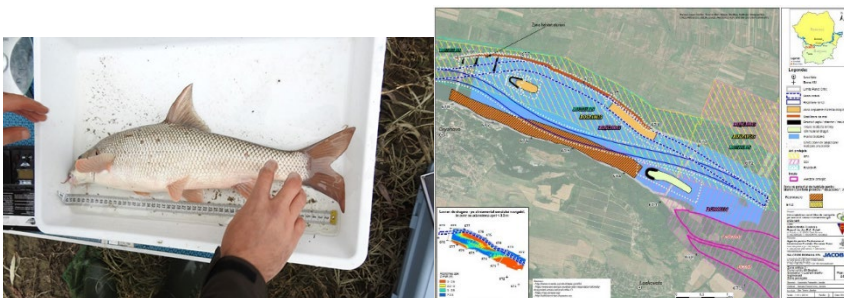
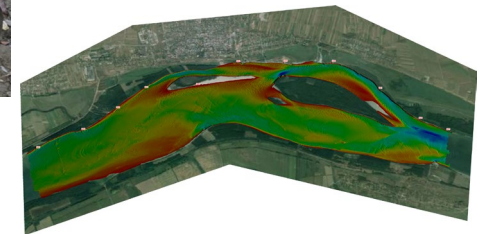
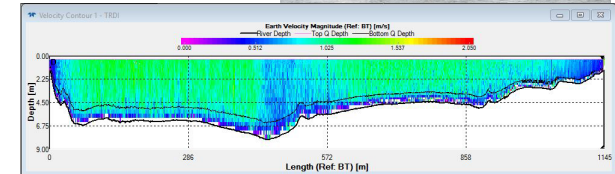
FAST Danube



Danube common sector, between Romania and Bulgaria

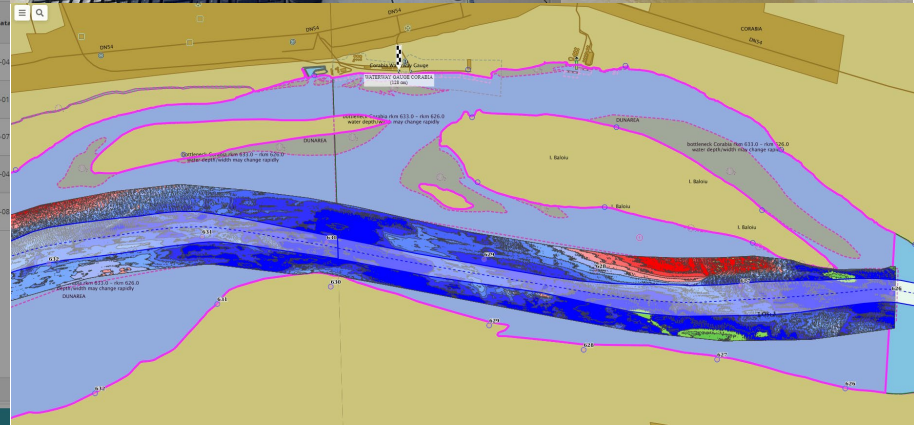
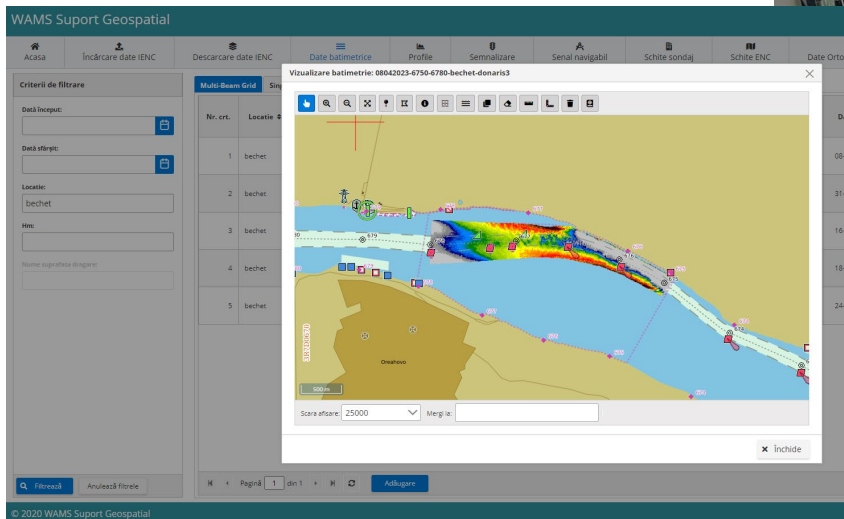


- 2 field trip study (bathymetry, hydrodynamics, sediment, LIDAR, geotechnical drilling)
- Modeling 1 D and 2D, navigation simulation modeling
- Technical solutions, different scenario;
- Migratory fish habitat assessment;
- Natura 2000 Forum;
- EIA and AA procedure, Romania and Bulgaria;
- Public debates;

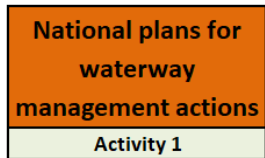
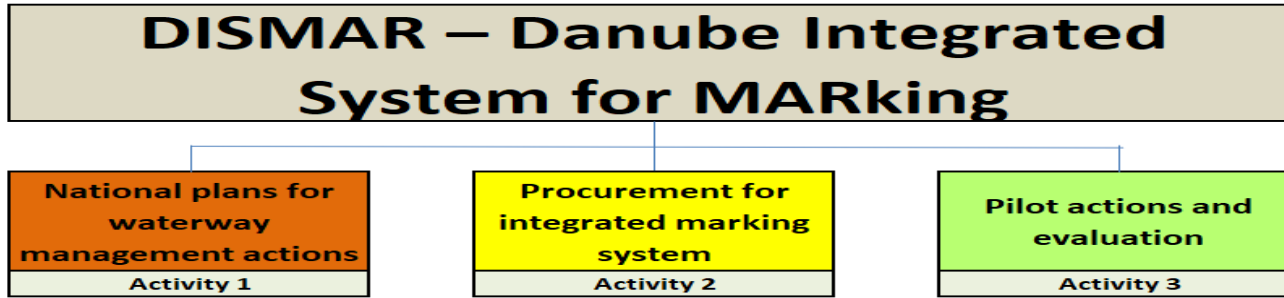


FAIRway Danube project Results

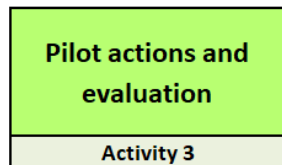
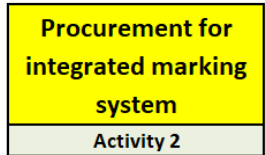
- **New marking vessel – CONCORDIA EU 2019;**
- **New surveying vessel – ARES ;**
- **National platform – WAMS, as a source of RO data for transnational platform WAMOS ;**



DISMAR - Danube Integrated System for MARKing



- **Developing the integrated marking plan;**
 - Integrated marking plan jointly developed
- **Developing the Testing and Evaluation Plan for Integrated Marking System Quality;**
 - Testing and evaluation plan for integrated marking system quality jointly developed;
- **Procurement of the marking vessels – 2 (RO and BG);**
- **Procurement of the floating marking**
 - 300 buoys
 - 80 LED lantern AIS AtoNS, type 1 / 60 LED lantern AIS AtoNS, type 3
 - 100 LED lantern
- **Procurement of the coastal marking**
 - 2040 pieces of coastal signs and kilometre indicators;
 - 40 LED lantern;
- **Procurement of the IT Platform**



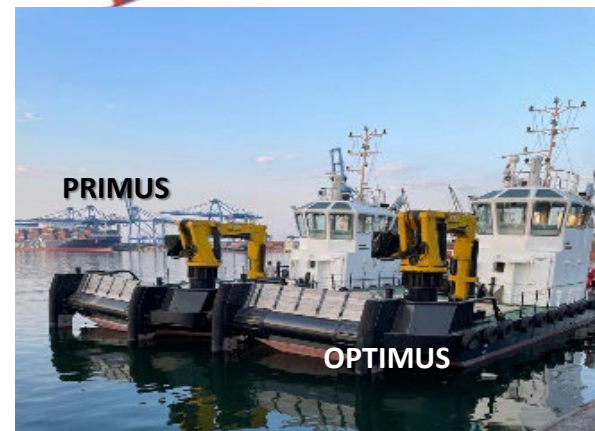
- **Pilot operation for marking system;**
- **Evaluation of the integrated marking system;**



PRIMUS project

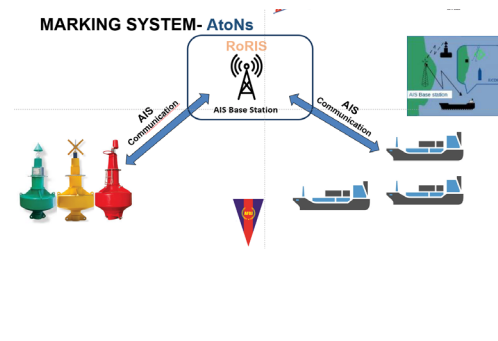


- Procurement of 2 marking vessels;
- Procurement of the maritime pilotage for pilots transfer;
- Procurement and field installation of the marking system, consisting of:
 - 235 pcs. Lanterns with incorporated AIS and solar panels,
 - 40 pcs. for beacons
 - 195 pcs. for buoys;
 - 2 pcs. Precision lights for navigation (PELs)
- Procurement of 20 portable pilotage units (PPUs)
- Developing an IT platform for RO-UA-MD data exchange;
- Field installation of 4 weather stations measuring;
- Field installation of 4 AIS base stations.



System for pilotage service - IT Platform Maritime Single Window Modul

SHIP PARTICULARS			
Flag RA: PANAMA	Ship Type: Chemical tanker, coaster	Gross Tonnage: 23981	Net Tonnage: 11471
Propulsion power: 2000 kW	International Call Numbers: 437405330; 437405330		
CERTIFICATE OF REGISTRY		COMPANY	
Port: PAFITY - Panama, Ciudad de	Company Name: IV SHIPPING COLTD-0692122921035		
Number: 53330-22	Company: IMO: 5394400	Phone: +92165509940	
Date of issue: 09.03.2022	Fax: +92165509958	Email: info@ivshipping.com	
Year of build: 2014	Dead weight: 20248.9 t	Length overall: 84.25 m	Beam: 14 m
		Summer draught: 5.23 m	
PORT OF CALL			
Port of Call: ROSSIA, Bolshie Tureli	ETA: 14.09.2023 05:00	ETD: 25.09.2023 10:00	
Master's Name: CEMAL KALENDER	Port Operator in port of call:	Particulars: UOCDE-ROSSIA, Bolshie Tureli, Bolshie Tureli	Port facility at arrival: 8000
Position in port of call:	Brief description of onboard cargo and quantities: BALLAST		
Purpose of Call: Means of transport customs clearance.			
NAME AND CONTACT DETAILS OF SHIP'S AGENT			
Company Name:	Company Phone:	Company Email:	
Company Fax:	Agent Name:	Agent Phone:	
Fore draught: 2.1 m	M&S-ship draught: 2.9 m	Air draught: 3.7 m	Air draught: 20.65 m



Thank you for your attention!

Carmen MANESCU

Administration of the Navigable Canals
compania@acn.ro

Romeo SOARE

Lower Danube River Administration
romeo.soare@afdj.ro