

Federal Waterway Danube

Development of the waterway and improvement of flood protection
between Straubing and Vilshofen



Welcome!

Flood in 2013

AK Deggendorf 04.06.2013



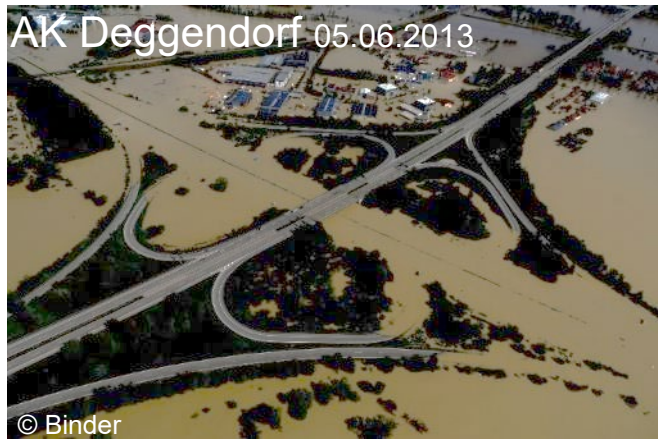
Blick auf Deggendorf 27.11.2011



Mühlhamer Schleife 15.10.2007



AK Deggendorf 05.06.2013



Blick auf Deggendorf 05.06.2013



Mühlhamer Schleife 05.06.2013



Dike Isar on the left side



Dike in Auterwörth



© Eckl, FFW Winzer



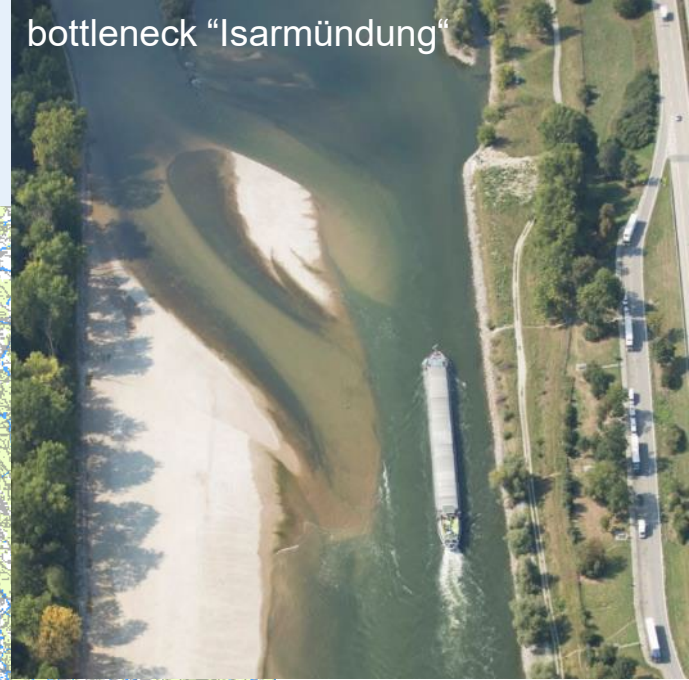
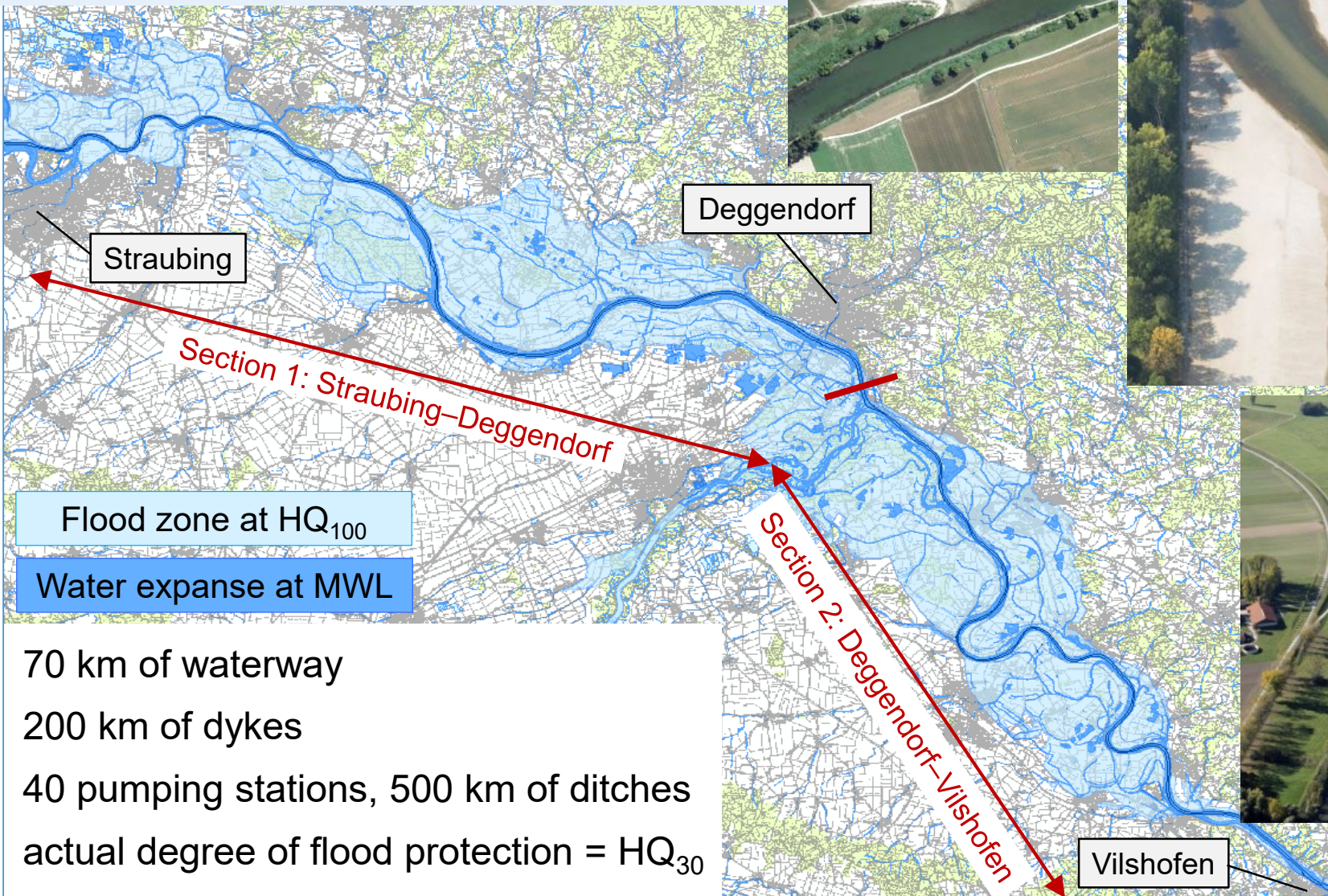
© WWA Deggendorf

Deggendorf - Fischerdorf



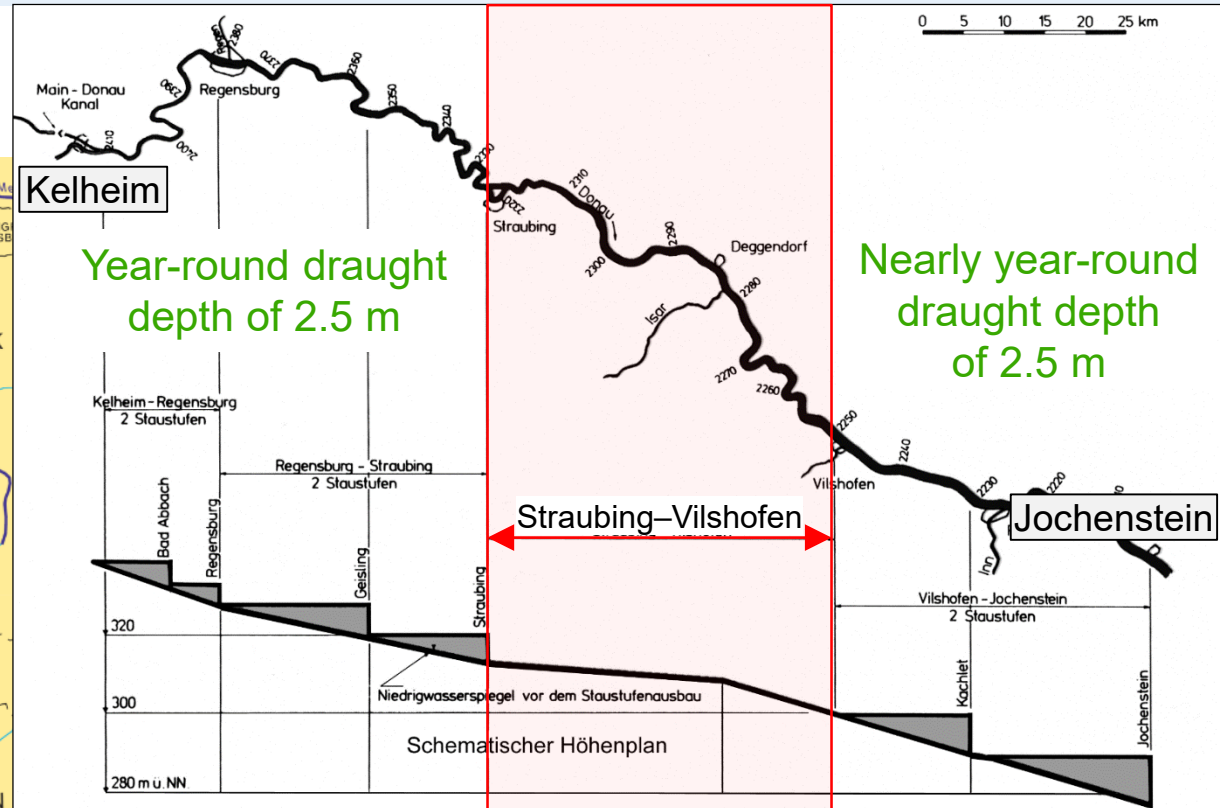
Bilder vom 05.06.2013 © Agroluftbild

Project area – overview



70 km of waterway
200 km of dykes
40 pumping stations, 500 km of ditches
actual degree of flood protection = HQ_{30}

Location within european & german waterways



Draught depth of 2.5 m
only 144 days per year

Draught depth of 1.6 m at
RNW (= LNWL*)

*) ... LNWL = low navigable water level

Project aim



Development of the waterway

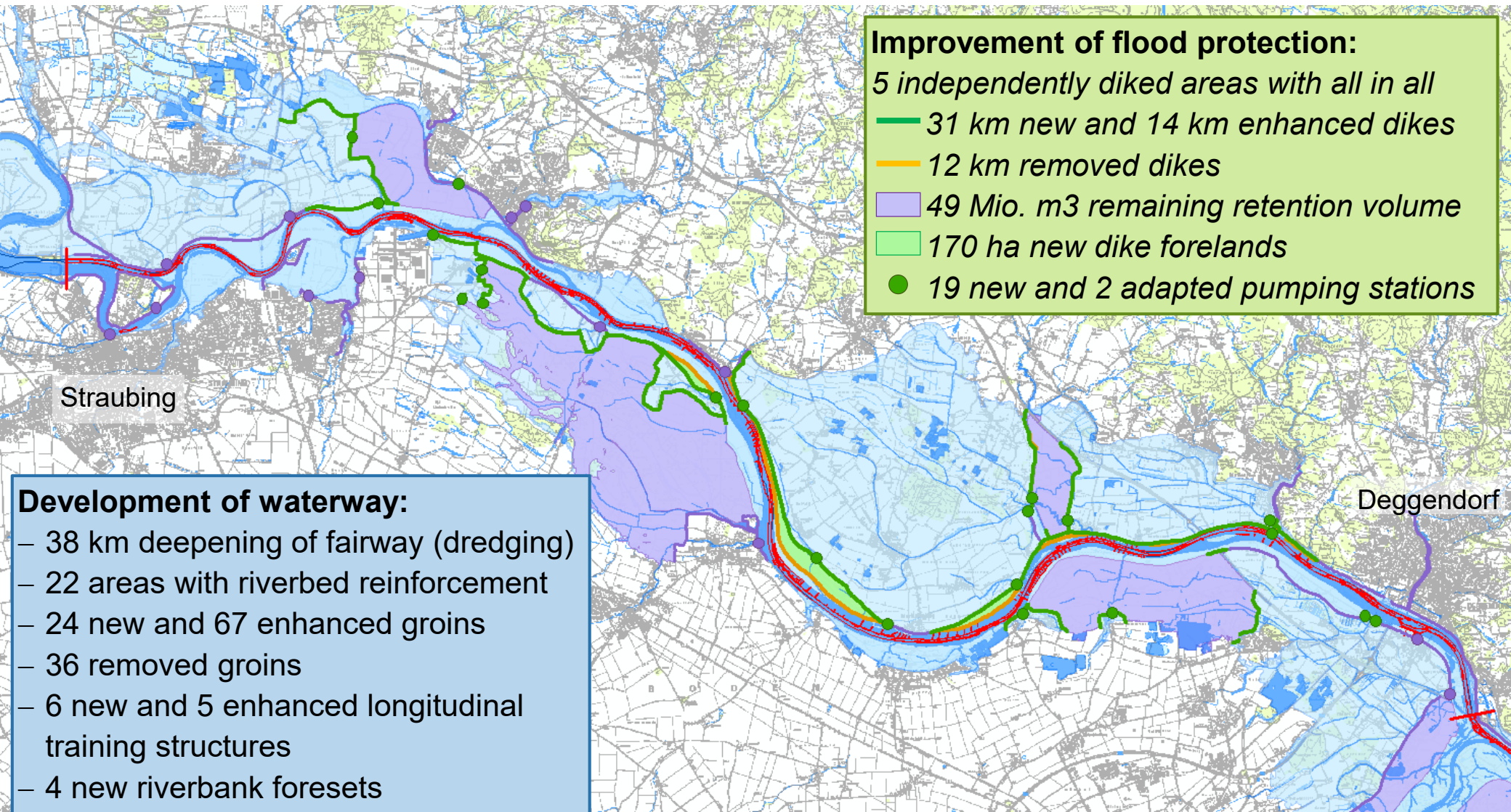
- Increasing the draught depth at LNWL^{*)} by at least **0.20 m from 1.60 m to 1.80 m** (200 days per year with at least 2.50 m)
- 9.7 km long stretch between Straubing (lock) and Bogen (railway bridge): increasing the draught depth at LNWL^{*)} by at least **0.65 m from 1.60 m to 2.25 m**
- Optimization of the existing shipping conditions regarding
 - proceeding bed erosion
 - safety and efficiency of vessel traffic
 - maintenance of the fairway

^{*)} ... LNWL = low navigable water level

Improvement of flood protection

- Increase of flood protection level **from HQ₃₀ to HQ₁₀₀**
- Reduction of water level during flood within the project area
- Avoidance of disadvantageous impacts on downstream riparians as well as within the project area

Section 1, Straubing-Deggendorf: engineering measures



Section 1: accompanying landscape conservation plan



Aquatic measures:

- 3 river islands instead of controlling structures
- 4 river islands (in loophole zones)
- 2 secondary channels (total length = 4 km)
- naturalization of riverbank (total length = 4 km)

Terrestrial measures:

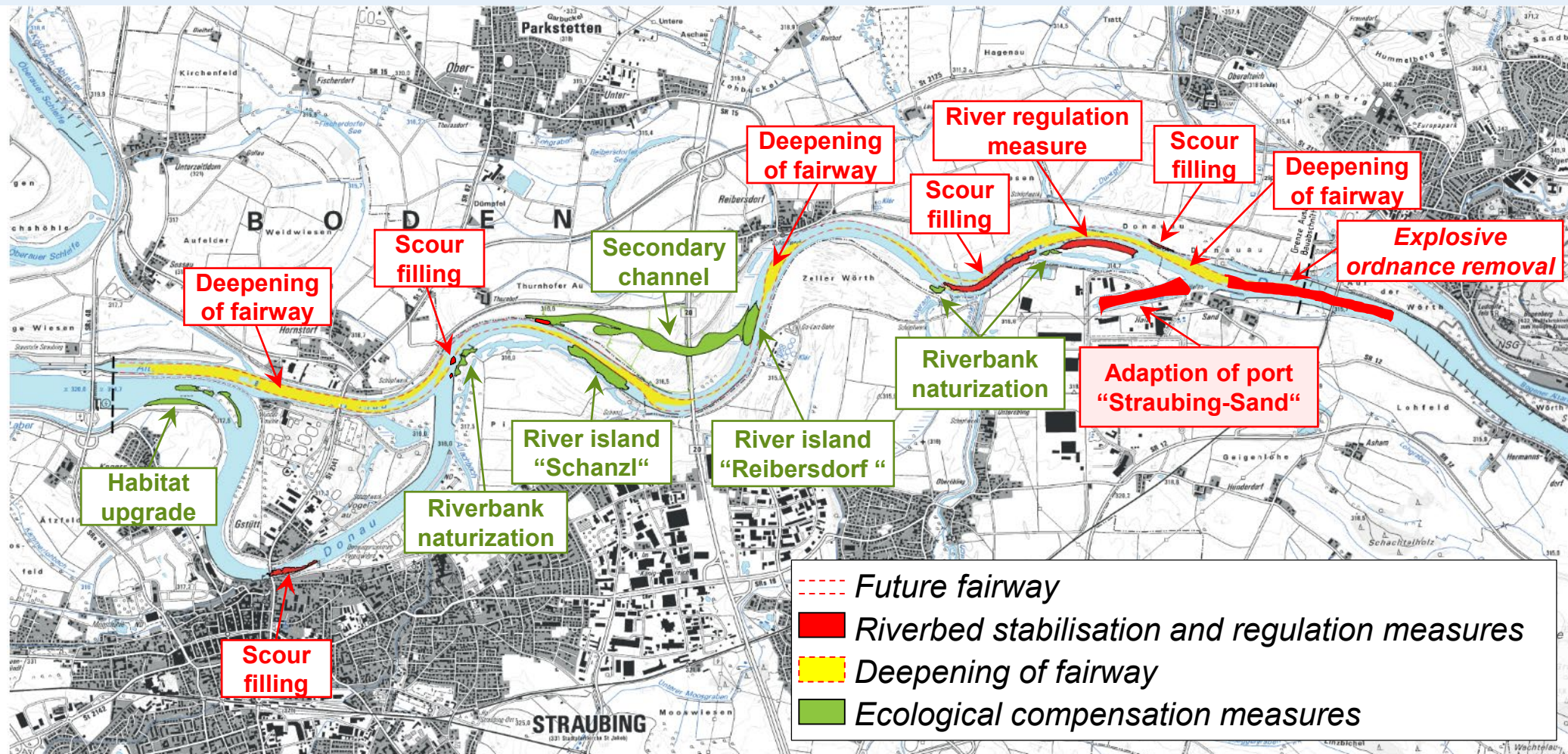
- 15 ha extensive meadows on dikes and protective strips
- measures mainly for meadow breeders, lizards, toads and other amphibians
 - 130 ha in the future dike forelands
 - 70 ha behind the dikes



Section 1: timeline of the approval procedure

- **Scoping meeting** **26.+28.11.2013**
- **Initiation of project approval procedure** **16.09. – 16.10.2014**
Public display of project papers
- **Public hearings** **2016 and 2017**
2 rounds of discussions with affected parties,
associations, organizations and authorities
- **Participation of European Commission** **01/2018 – 11/2019**
significant effects on FloraFaunaHabitat-sites
Positive opinion issued by the European Commission
due to “imperative reasons of overriding public interest”
- **Plan approval order** **20.12.2019**

Section 1: Waterway, construction phase 1



Inauguration Waterway, construction phase 1 on 25.01.2024

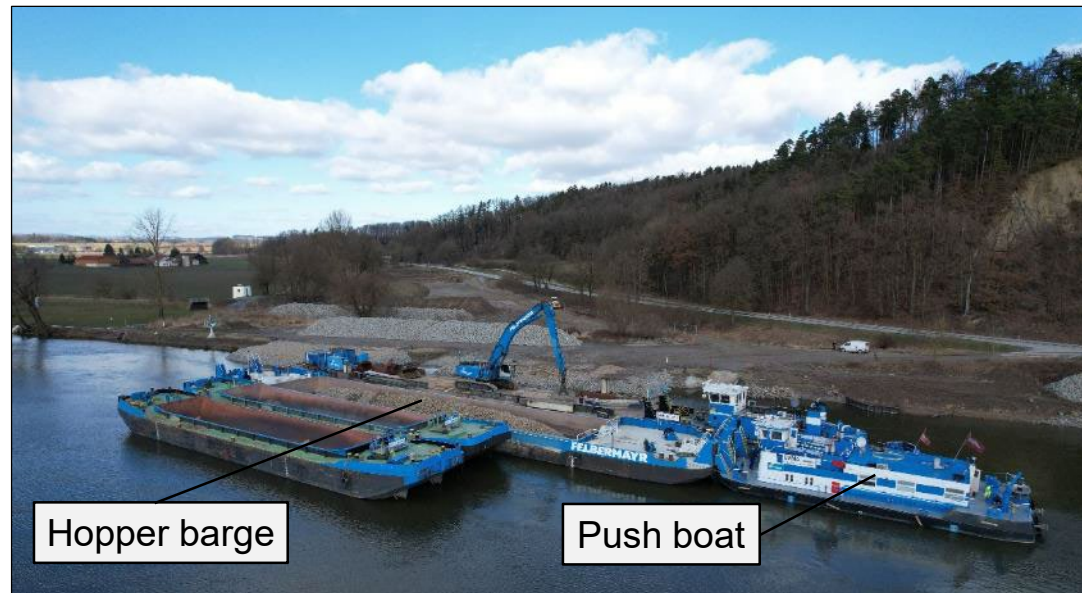
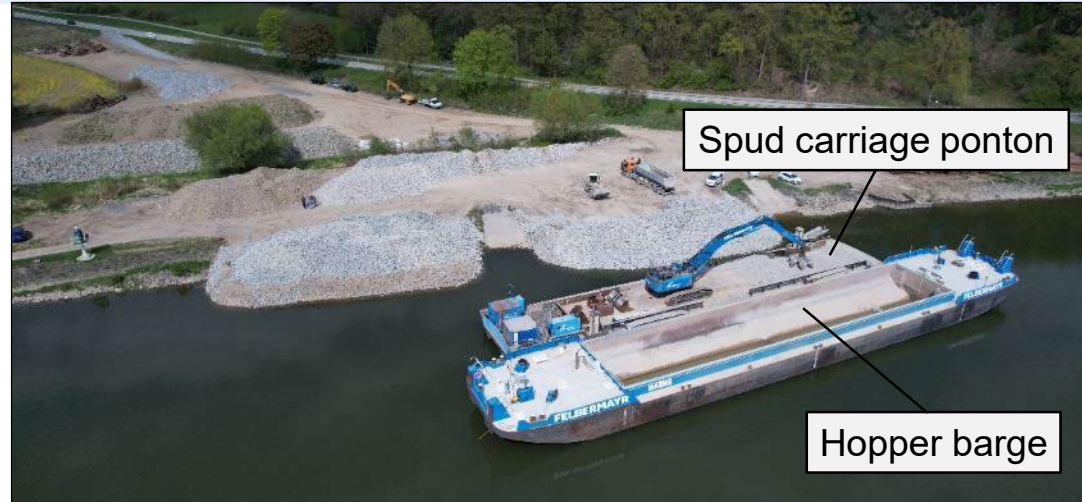


Material handling

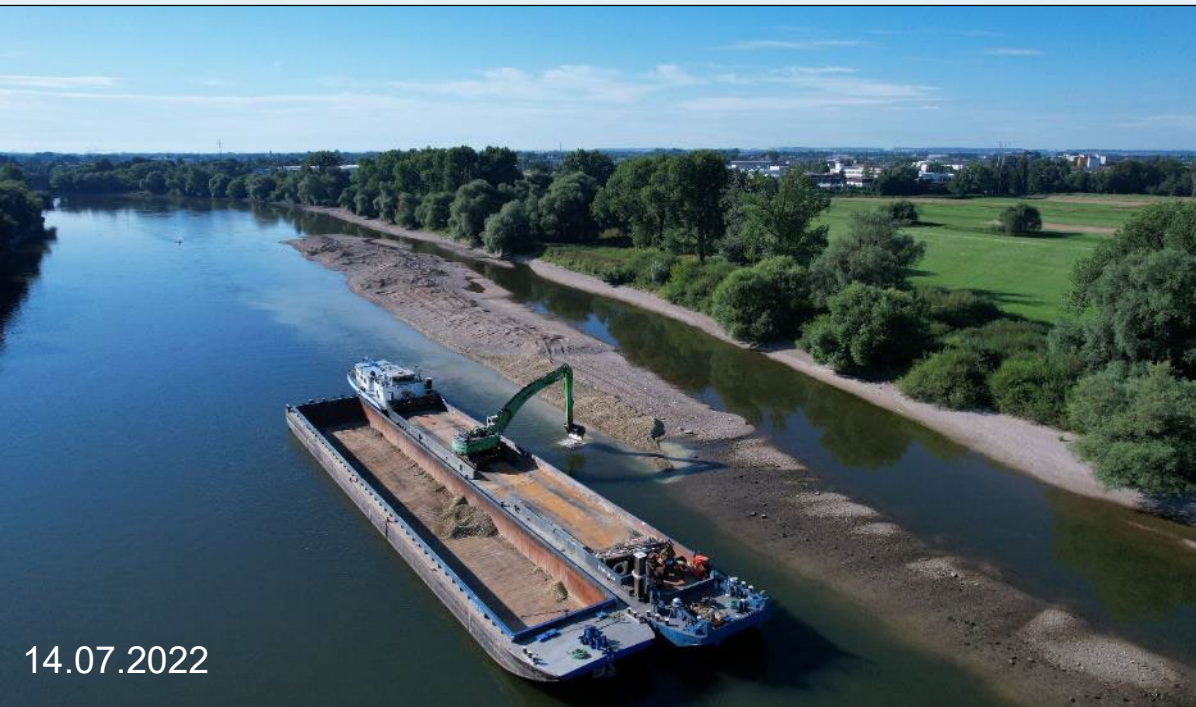


above: deepening the fairway
by dredging

right: reloading point near Pfelling
for material handling between
water and land



River island “Schanzl“



left: Pouring ~25.000 m³ gravel
(including submerged parts)

right: Installation of tree spurs
(for ecological structuring)



Secondary channel “Reibersdorf“

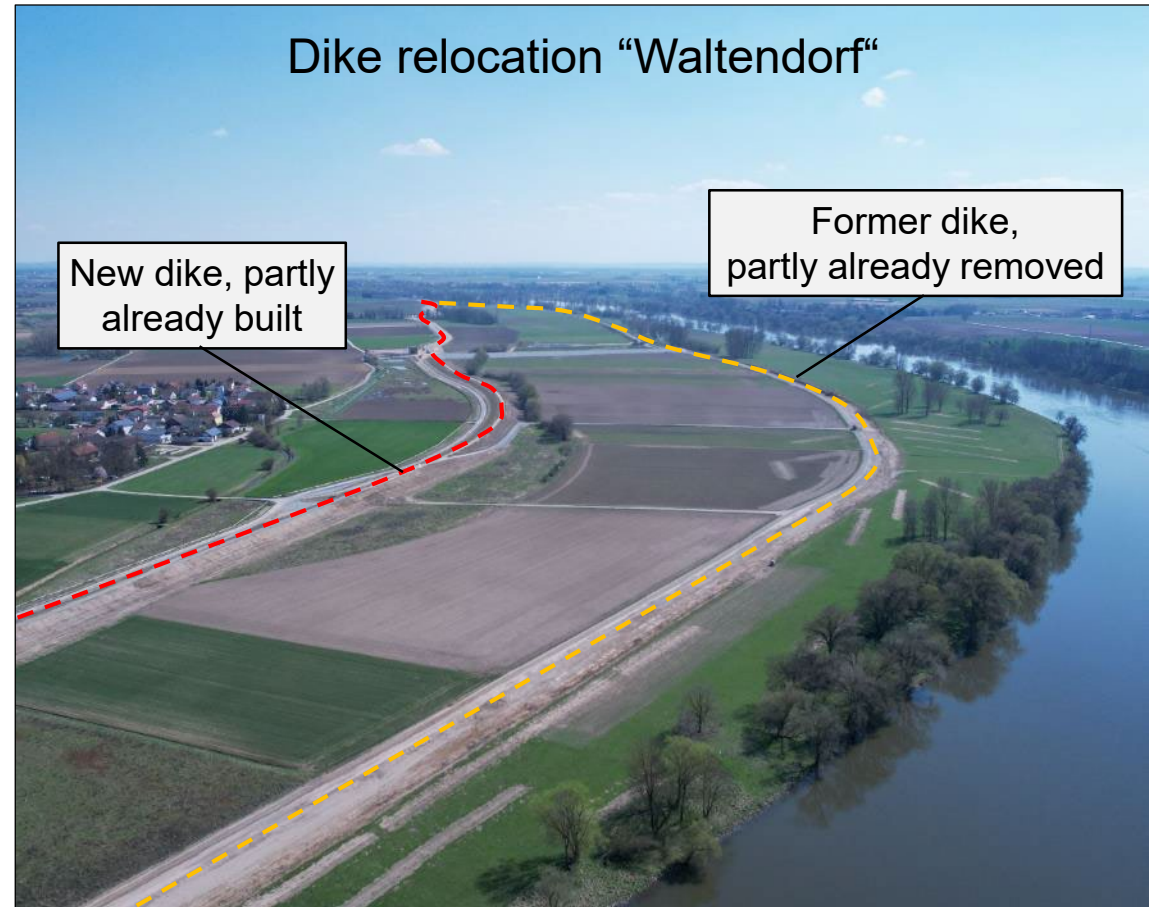
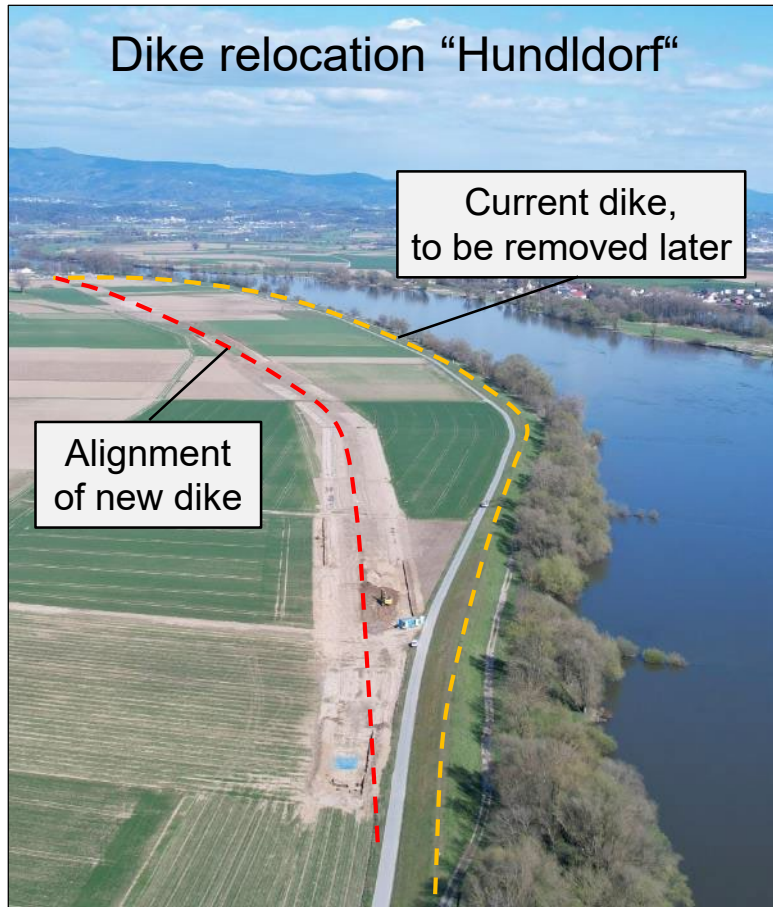


View from upstream with temporary coffer dam



View from downstream with branching of water body and small island

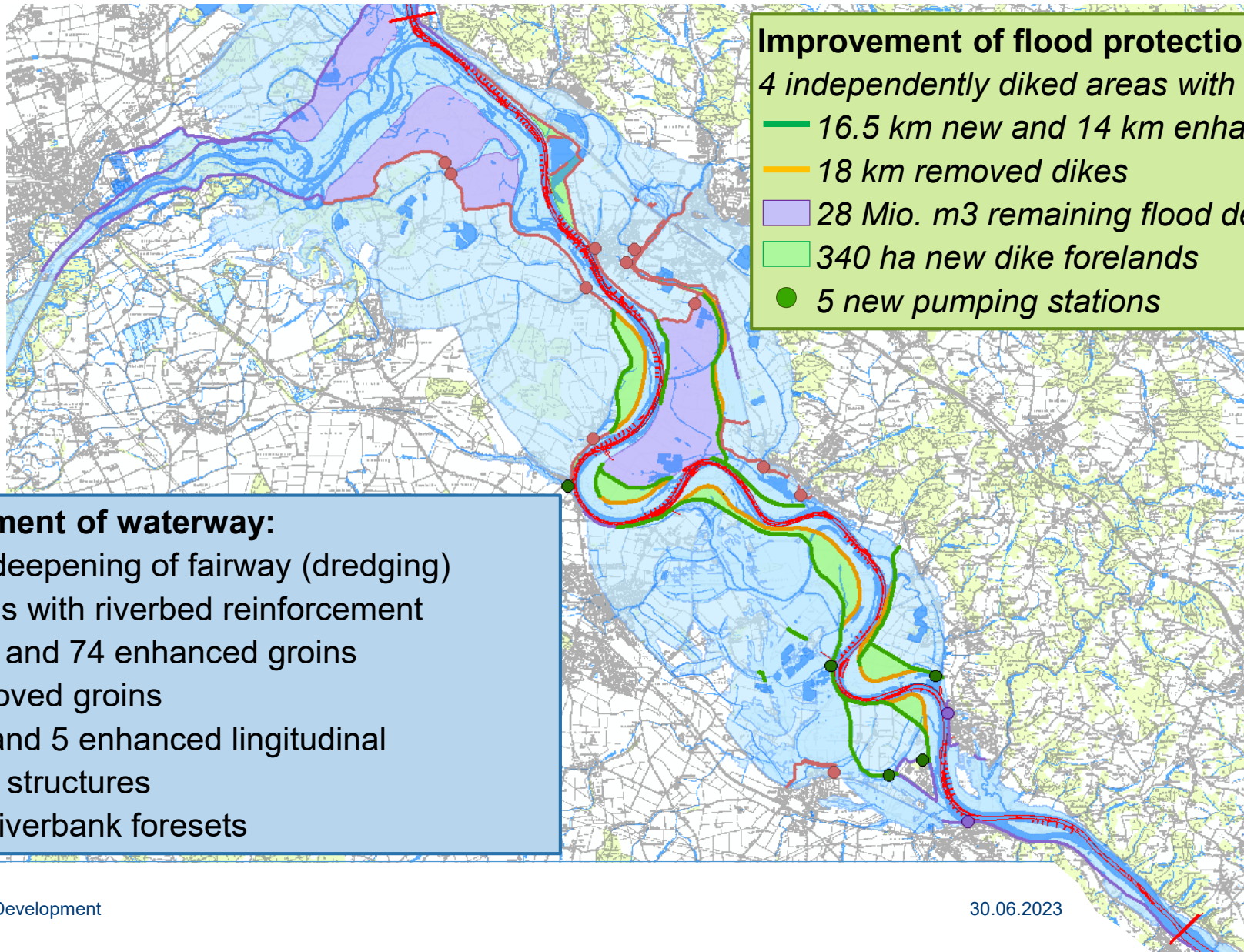
Section 1: Flood protection, dike relocations



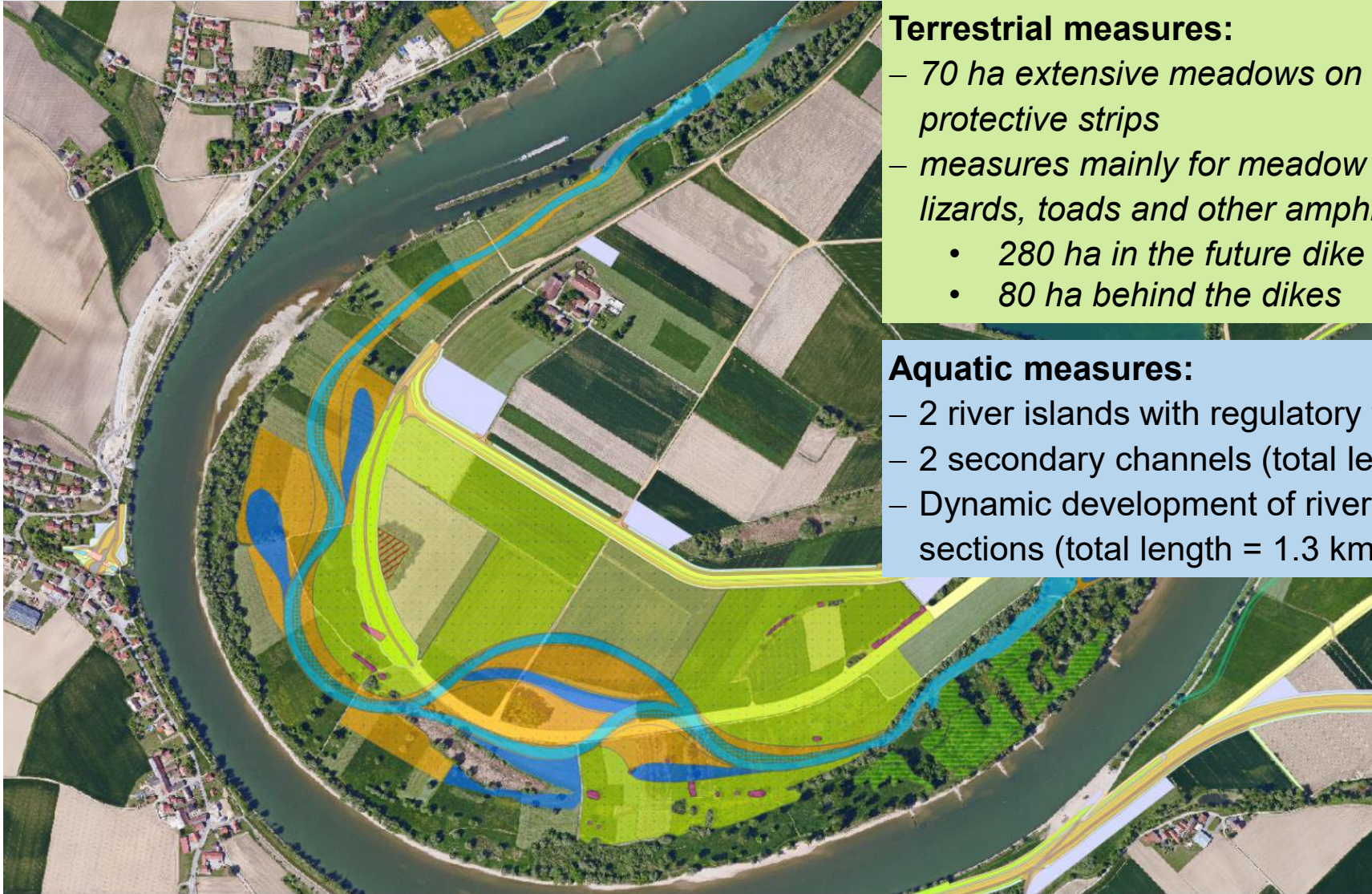
Section 1: Flood protection, pumping stations



Section 2, Deggendorf - Vilshofen: engineering measures



Section 2: accompanying landscape conservation plan



Terrestrial measures:

- 70 ha extensive meadows on dikes and protective strips
- measures mainly for meadow breeders, lizards, toads and other amphibians
 - 280 ha in the future dike forelands
 - 80 ha behind the dikes

Aquatic measures:

- 2 river islands with regulatory function
- 2 secondary channels (total length = 7 km)
- Dynamic development of riverbank sections (total length = 1.3 km)

Section 2: timeline of the approval procedure

- **Scoping meeting** **29.07.2015**
- **Initiation of project approval procedure** **05.11. – 04.12.2018**
Public display of project papers
- **Public hearings** **2020 - 2023**
with aggrieved parties, associations,
organizations and authorities
Online Consultations with nature conservation authorities
- **Participation of European Commission** **03/2024 – ??**
significant effects on FloraFaunaHabitat-sites
Positive opinion issued by the European Commission
due to “imperative reasons of overriding public interest”
- **Plan approval order** **2024 - 2025??**

History: RMD AG → WIGES GmbH

1921 Main-Danube-Contract

Foundation of the Rhein-Main-Donau AG (RMD AG) in order to construct the Main-Danube-Waterway.

1994 Privatization of the RMD AG (today: RMD GmbH)

1999 Foundation of the RMD Wasserstraßen GmbH

February 2020 **Purchase of the RMD Wasserstraßen GmbH**
of the Freestate of Bavaria

June 2020 New Name:
WIGES Wasserbauliche Infrastrukturgesellschaft mbH
(short: WIGES GmbH)



Thanks for your attention

... and don't forget to visit the project website

... or follow us



Lebensader Donau



www.lebensader-donau.de