



The Republic of Serbia



Development of new international passenger terminals in Serbia – New Destinations for Sustainable Travel

Port Governance Agency

Danube Business Talks, Linz

13 October 2022

Port Governance Agency (PGA)

Regulatory role

- Suggesting laws to the Government
- Proscribing conditions that ports, harbors and marinas must fulfill

Professional role

- Defining of port areas
- Issuing of port licences
- Keeping a register of port operators
- Charging of port fees

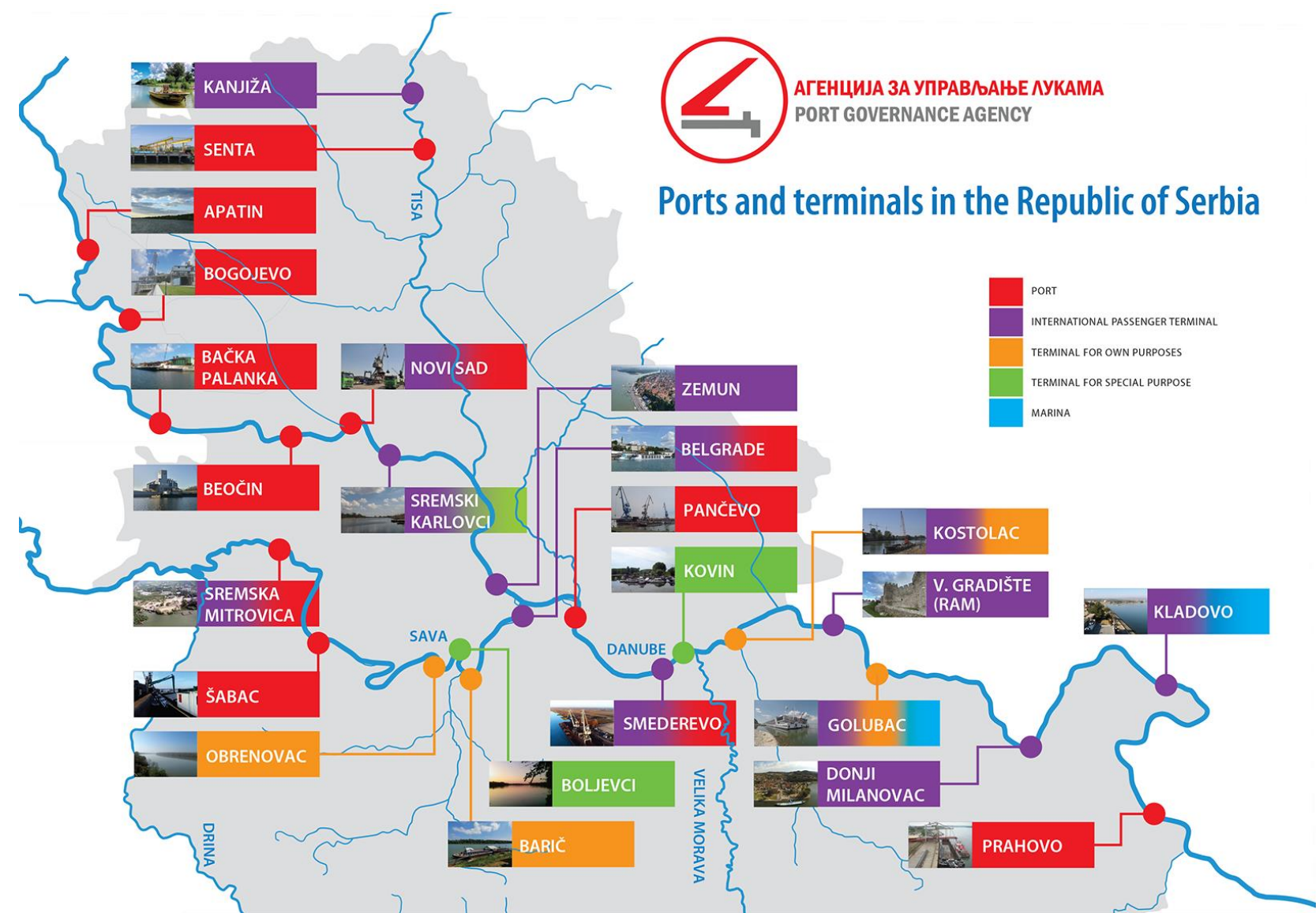
Development role

- Investments in port infrastructure
- Development of port terminals
- Promotion of waterway traffic

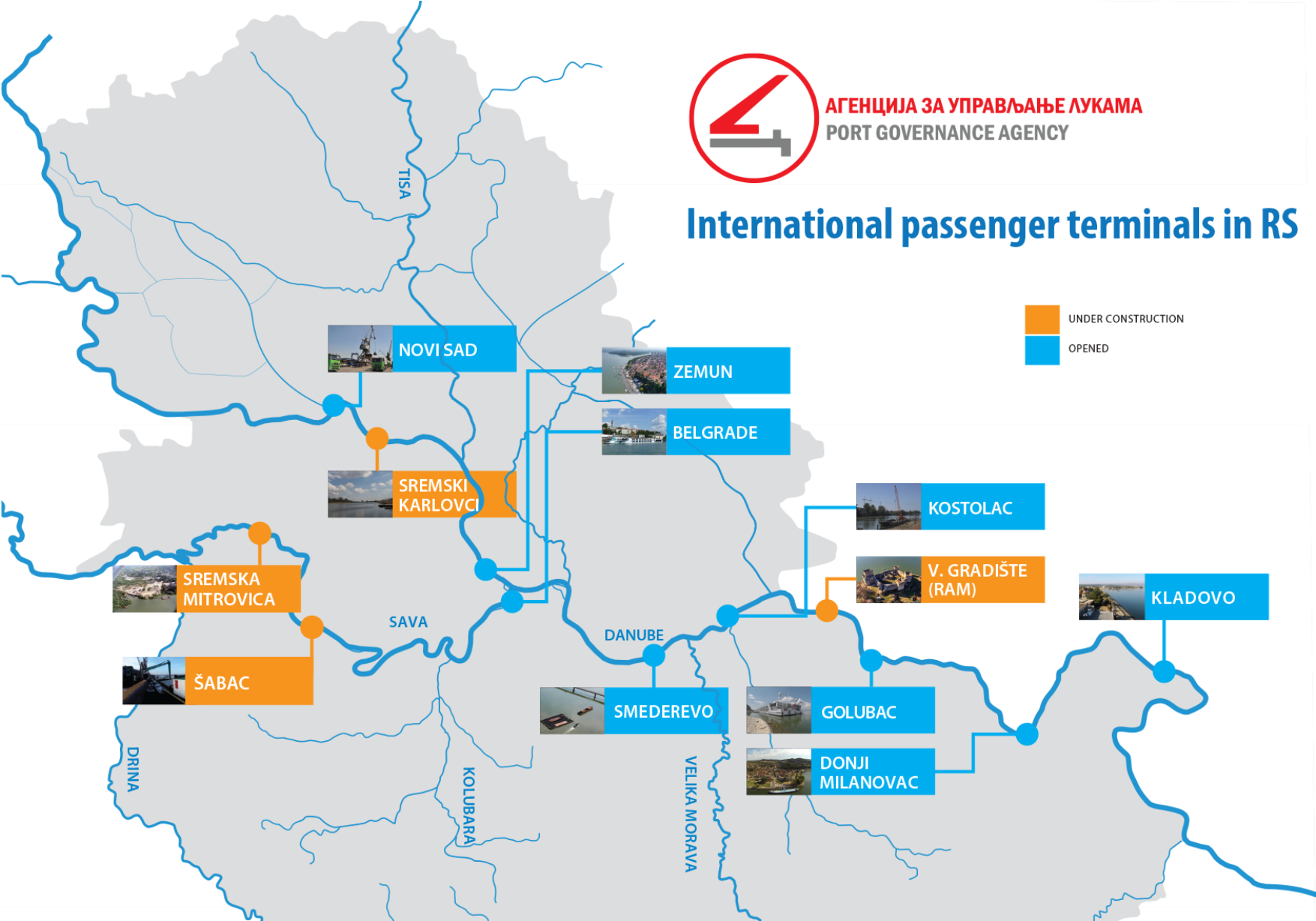
Port Governance Agency is a state administrative body and represents port authority for all ports, harbors and marinas in Republic of Serbia.



Ports and terminals in the Republic of Serbia

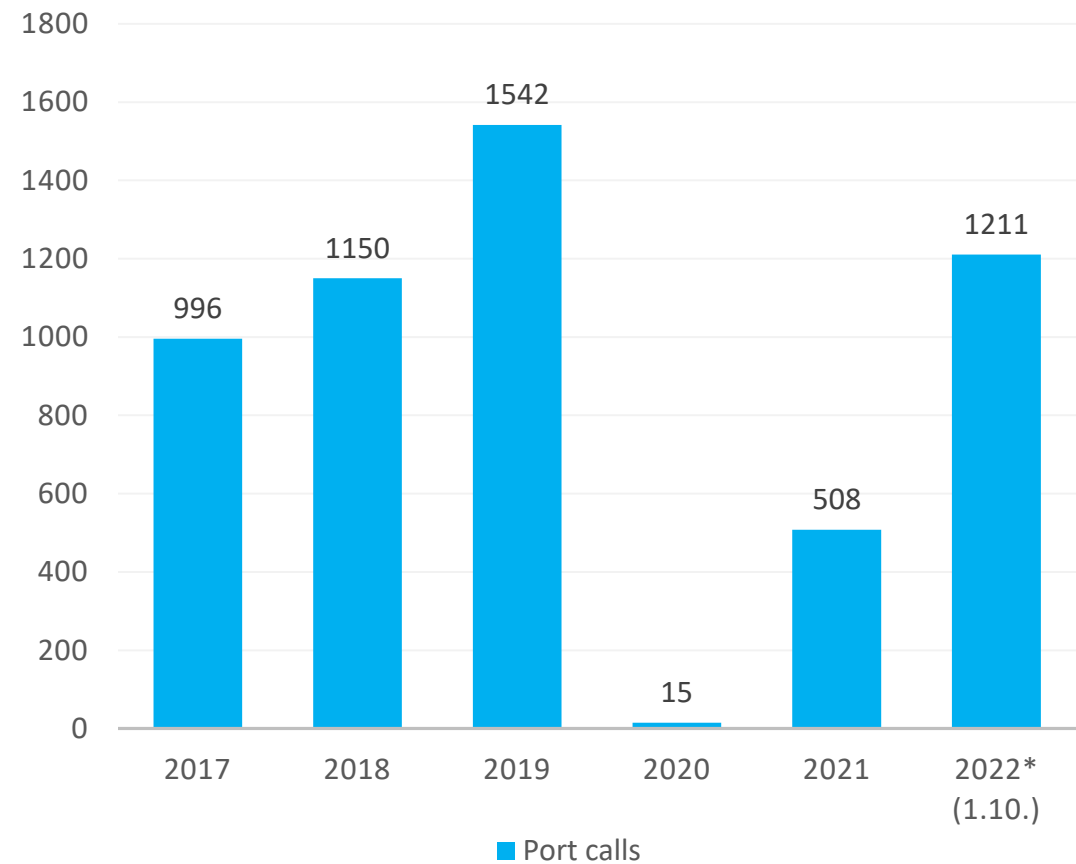


International passenger terminals in the Republic of Serbia

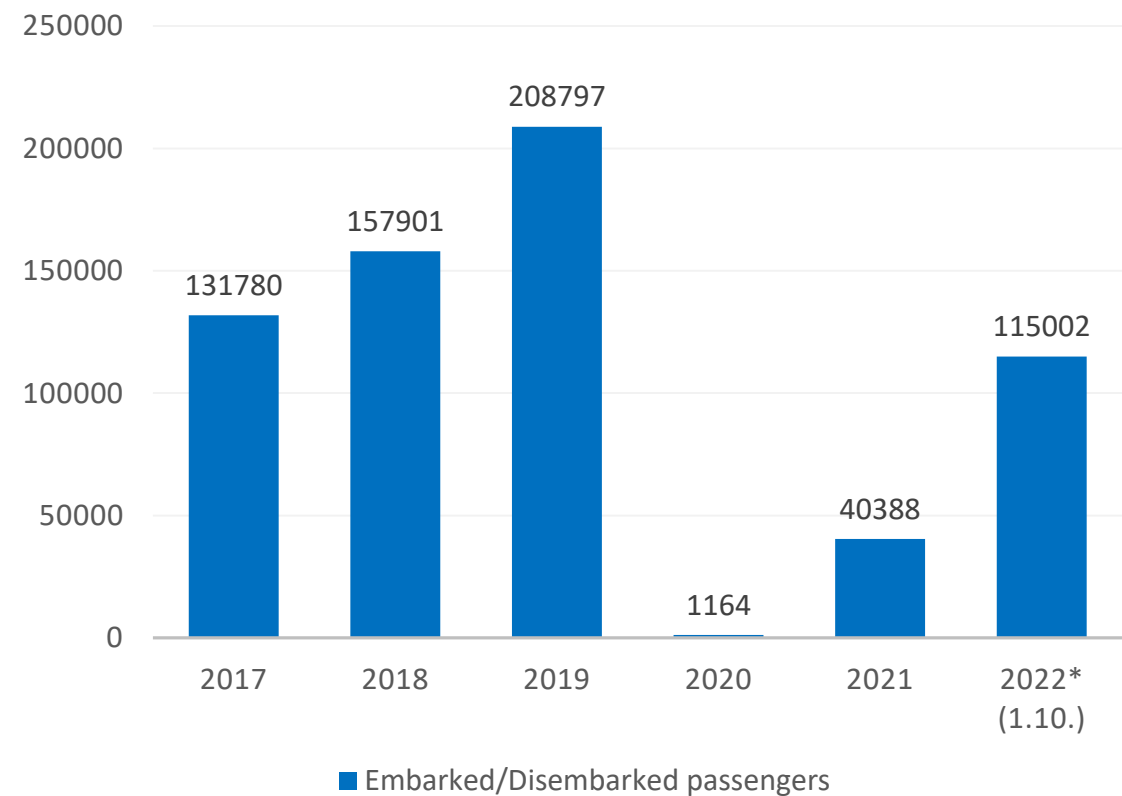


Passenger traffic in the Republic of Serbia

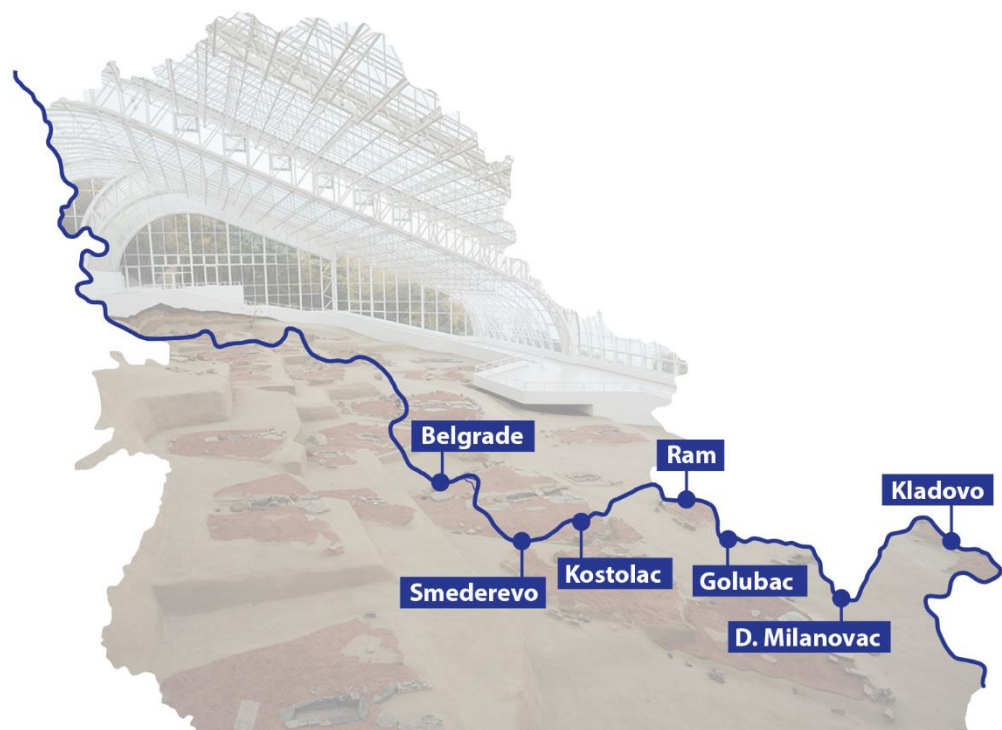
Number of port calls



Number of embarked/disembarked passengers



Must see in Serbia: History and heritage



Kalemegdan



Viminacium



Lepenski vir



Tabula Traiana



Must see in Serbia: Fortresses – Stone witnesses of history



Ram



Smederevo



Fetislam



Golubac



Must see in Serbia: Religious facilities



The Temple of Saint Sava



The Bajrakli Mosque



*The Sukkat Shalom
Synagogue*



*The Name of Mary
Church*



Technical solutions for IPTs in Serbia



Kostolac

Sloped quay wall

Pylons

Reconstructed barge

Custom premisses on board

Dimensions: 75 x 10 m

Lenght of vessels: up to 135 m



Golubac

Sloped quay wall

Pylons

Floating dock

Custom premisses on shore

Dimensions: 42 x 8 m

Lenght of vessels: up to 135 m



Belgrade

Vertical quay wall

Pylons

Floating dock

Custom premisses on board

Dimensions: 200 x 8 m

Lenght of vessels: up to 135 m



Bunker stations in the Republic of Serbia



New International Passenger terminals - 2022

ZEMUN - FOREVER ITS OWN, ON THE DANUBE SHORE



Attractions: Gardos Tower, Saint Nicholas Church



Increased number of port calls and tourists.
Connecting Belgrade with other capitals –
leaders in nautical tourism.



Opening: Nautical season 2022



The Republic of Serbia
Port Governance Agency

New International Passenger terminals - 2022

SREMSKA MITROVICA – THE TOWN OF ROMAN EMPERORS



Attractions: Roman Palace, City center



Development of potentials of the Sava river for cruising.



Opening: Nautical season 2022



The Republic of Serbia
Port Governance Agency

New International Passenger terminals - 2023

VELIKO GRADIŠTE (RAM) – THE GOLDEN FLEECE OF THE DANUBE SPIRIT



Attractions: Ram Fortress, Silver Lake



Further promoting of Eastern Serbia and improving of nautical tourism.



Opening: Nautical season 2023



The Republic of Serbia
Port Governance Agency

New International Passenger terminals - 2023

SABAC – THE LITTLE PARIS



Attractions: City center, Old Town fortress



Development of potentials of the Sava river for cruising.

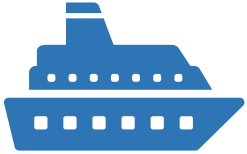


Opening: Nautical season 2023



The Republic of Serbia
Port Governance Agency

Awake the Danube



Promotion of cruising in
the Upper and Lower
Danube Region of Serbia



Connecting 11 towns



AWAKE THE DANUBE



Inscribing towns on the
tourist map of Europe



The Republic of Serbia
Port Governance Agency



Thank you for your attention!

Vuk Perovic, director

Port Governance Agency
Nemanjina 4, Belgrade

E-mail: vuk.perovic@aul.gov.rs

website: www.aul.gov.rs



The Republic of Serbia
Port Governance Agency