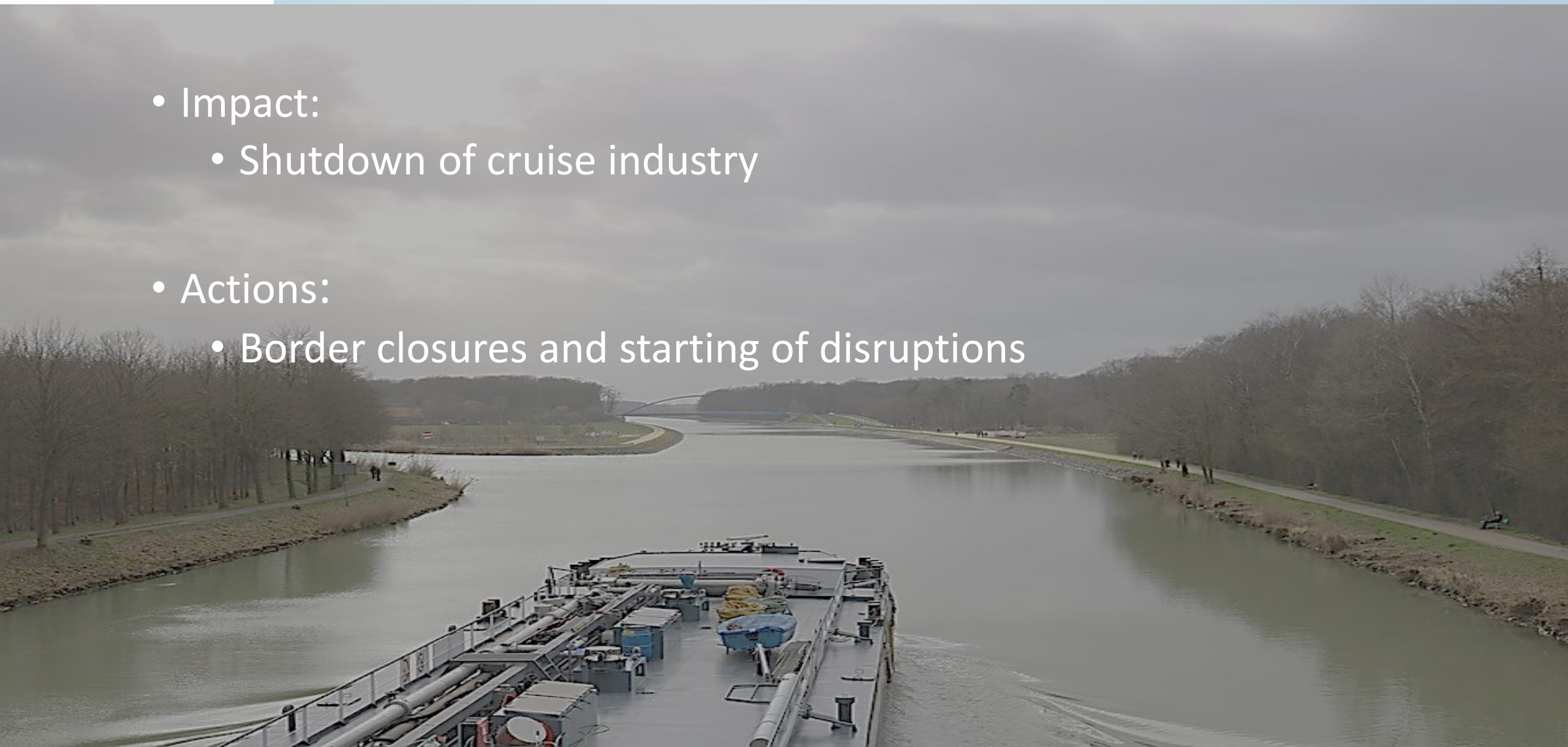


Sailing through the crisis – challenges for inland navigation

General - Start of the Crisis

- Impact:
 - Shutdown of cruise industry
- Actions:
 - Border closures and starting of disruptions



General – Spring and Summer 2020

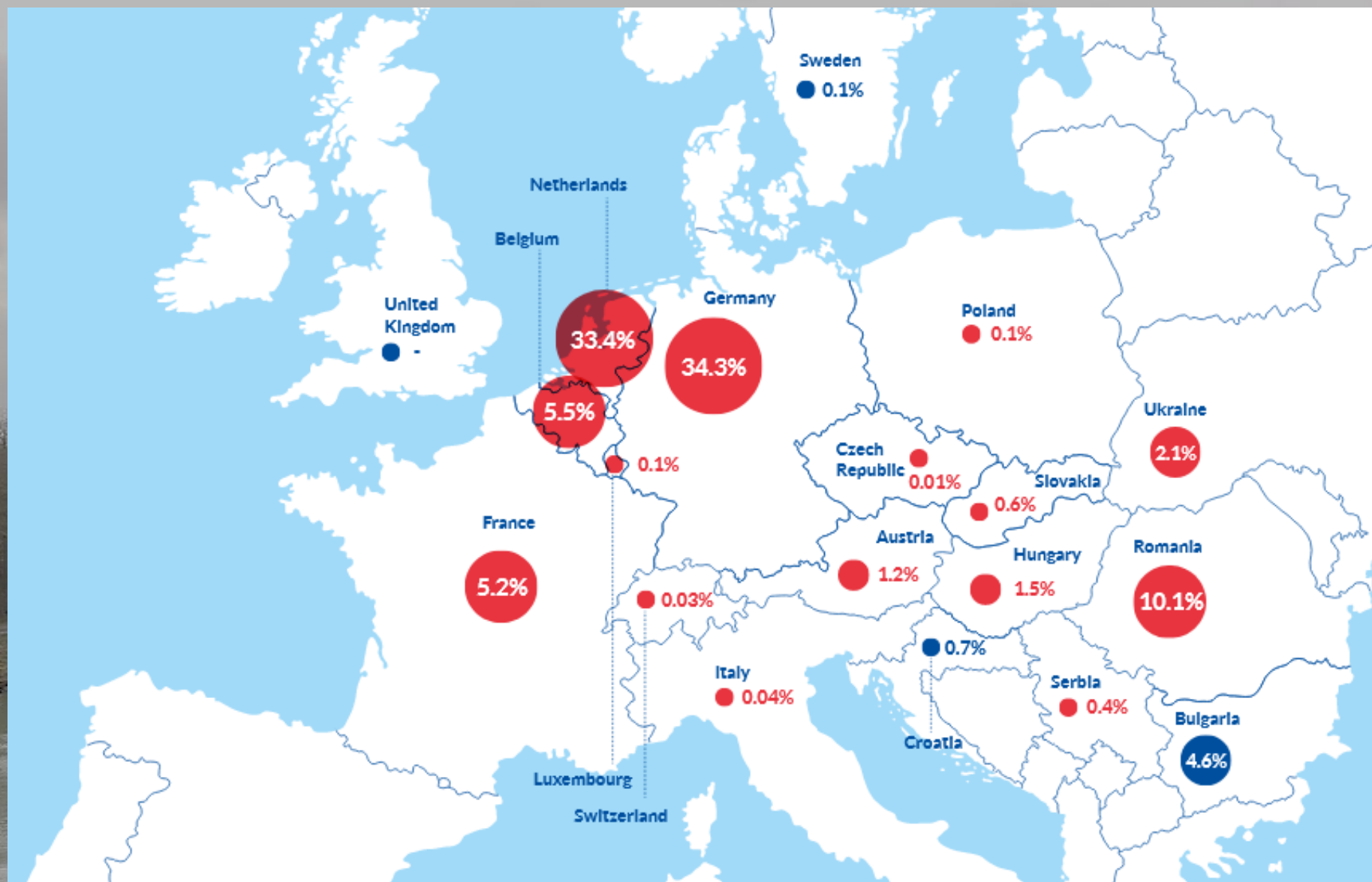
- Impact:
 - Border closures led to disruptions in transport and crew changes
- Actions:
 - National Governments set up support mechanism to help struggling companies



Specific impacts

- Container ports and terminals hit hard
- Ports servicing cruise industry are hit hardest
- Those ports servicing agriculture, raw resources and bulk maintained strong trade flows
- Reduction in shipping





Port of Vienna: Strong defence against pandemic

As an important infrastructure provider and supplier of the City of Vienna, the Port of Vienna remains in continuous operation despite restrictions.

- Protection of employees, customers and partners
- Home Office
- Shift work in two teams
- Contactless truck handling at IN-Gate

Ubiquitous internet

Bandwidth and speed is available
wherever needed

➤ High-speed internet access in all key strategic
areas of the Port of Vienna

Cutting-edge hardware & software

- All facilities are equipped with new-generation PCs/laptops
- Citrix: location-independent data access for all staff members
- All digital port projects and developments are aligned with the "Vienna 2030 – Economy & Innovation" strategy

Upgrade of infrastructure



The Corona year in figures...

Financial data of Port of Vienna Group ... ongoing successful

REVENUES

36.8

€ million
(+1)



OPERATING RESULT

4.5

€ million
(+28 %)



INVESTMENTS

12

€ million



CONTAINER THROUGHPUT

428,000

(+14)



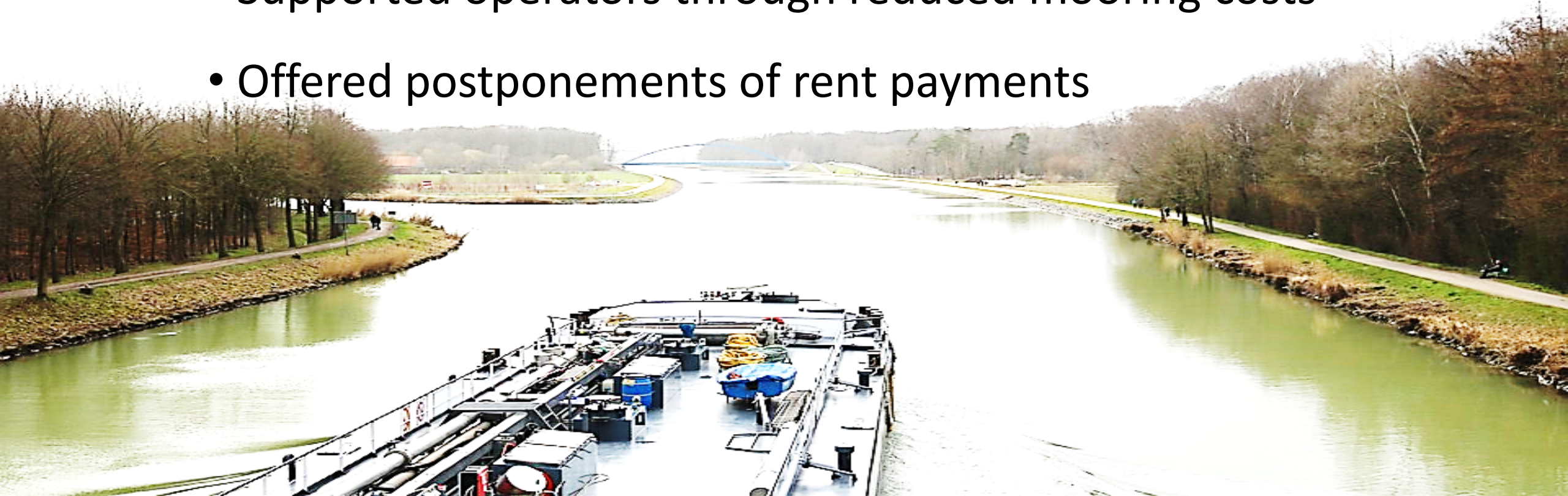
General – Winter 2020 and 2021

- Impact:
 - Most ports recover and have a positive 2020 in the end
- Actions:
 - National lockdowns return but most if not all transport and logistical operations remain strong



Individual Ports

- Ensured continued operations as infections rose
- Supported operators through reduced mooring costs
- Offered postponements of rent payments





EFIP

European
Federation
of Inland Ports
www.inlandports.eu



HAFEN WIEN

ein unternehmen der **wienholding**

hafenwien.com

Thank you for your attention!

Mag. Fritz Lehr MBA
CFO Port of Vienna
President of EFIP

Vienna, 13rd October 2021